

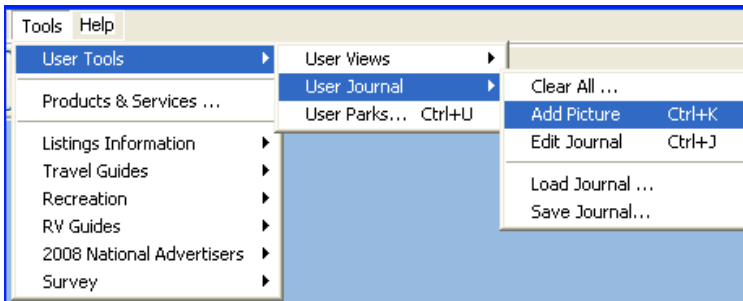
Using the User (Picture) Journal in Trailer Life Directory Campground Navigator 2008 A Step – by – Step Guide

The User Journal in TLDCN08 allows the user to associate pictures with specific latitude and longitude coordinates, add comments to them and in general create a pictorial album of their trip. In this tutorial the user will be taken through the process of using this feature.

The picture journal mode is toggled on/off by clicking on the photos button.



It can also be activated by selecting **Tools → User Tools → User Journal**, and then selecting one of the available options. In addition, the picture mode can be accessed by pressing **Ctrl – K**.



In this tutorial, we will be accessing the picture mode by selecting:

**Tools → User Tools
→ User Journal → Add
Picture.**

However, before we can begin adding pictures we must find the location on the map that we would like the picture to be placed at.

This cannot be done while in picture journal mode. Once the picture journal mode is started, the user can only click on a part of the map that is visible to indicate the precise position of placement for the picture. They will not be able to zoom, pan, or search while in picture mode.

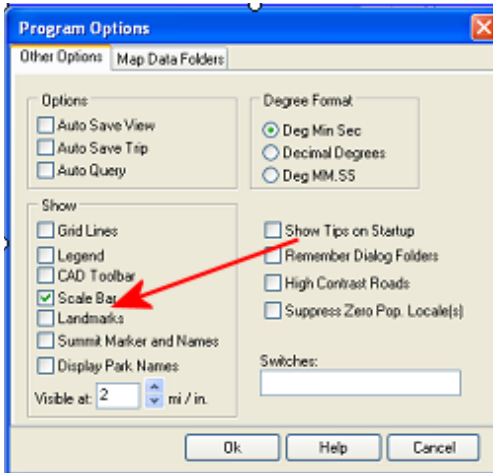
It is recommended that the pictures are placed while the current map scale is less than one mile in order for the picture to be placed accurately. When looking at the map at USA level each pixel may represent tens of miles. Clicking on the map at that zoom level will place the picture anywhere in a 10, 20, or 30 mile area, near the point that was clicked. As we zoom in closer, each pixel represents hundreds of feet, allowing us to place the picture more accurately.

Note that once a picture has been placed on the map it cannot be moved. It has to be deleted and a new instance has to be added at a new location.

To make sure that you are zoomed- in close enough we can check the scale bar on the top left hand corner of the screen. If the scale bar shows more than, let's say 1000 feet, you can use the Zoom toolbar, or Press **Shift-F1** to zoom closer.



Note that if this scale bar is not visible, select **File → Program Options, →** and check the box next to **Scale Bar**.

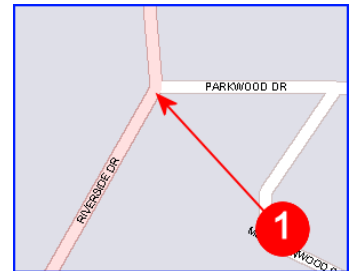


Once we make sure that we are zoomed in close to the map we are ready to enter picture mode and start placing pictures in our photo journal.

1. As mentioned earlier select **File → User tools → User Journals → Add Picture**
The yellow highlighted text at the top of the screen indicates that we are in fact in picture mode.

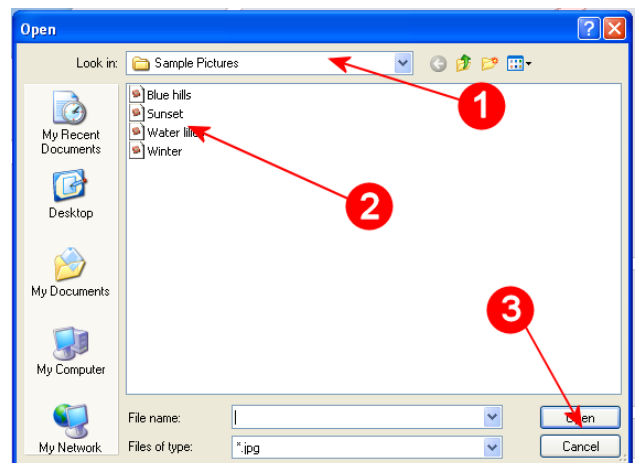
PHOTO: Click on Picture icon to edit, or click on the map to add a New Picture, or ESC to cancel

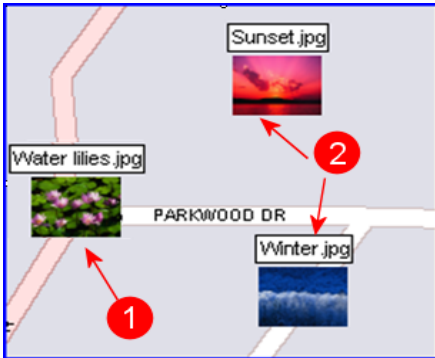
2. Place the cursor on the exact point on the map that you wish to place the picture. In this case let us place it on the intersection of **Riverside Dr. and Parkwood (1)**



3. Click on that point. This opens a standard windows dialog that allows us to navigate to the folder on the hard drive where the desired picture is stored.

In this Window, navigate to the folder containing the image file. (1), Choose an image from the list in the folder, in this case we will select the image called water lilies,(2) and then open that image either by double clicking on the image file name or by clicking the open button.(3)





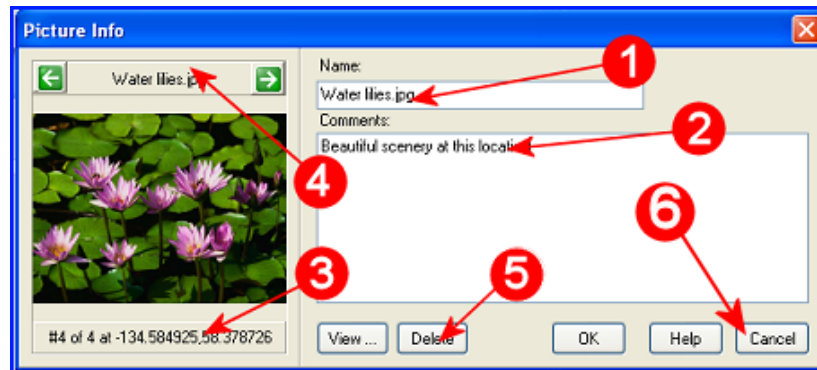
Once the picture is open a thumbnail image along with the name of the chosen photo will be displayed on the map at the previously selected point (1).

It is possible to repeat this process and users may add as many images as they wish to the picture journal (2). Once a picture has been added by the user, it is saved in the TLDCN program folder, in a sub folder called "My Pictures"

Now that we have placed our photo on the map, we can view it and edit it in the picture journal. To open the picture journal while you re in picture mode, simply click on one

The picture info dialog will open with the selected image.

Note that this dialog displays a large thumbnail image of the picture. Here, we can change the name for the image, instead of using the default file name, by clicking in the box titled name and entering our own name/title for it, (1)



We can also add comments to be associated with the image by entering text into the comments area of the dialog. (2) Note that the latitude and longitude coordinates associated with the picture are displayed on the bottom left corner of this dialog. (3) We may also cycle through all of the pictures that are saved in the current photo journal by clicking on the right and left arrow keys next to the name of the **image**. (4) Finally, we can delete the image from the journal if we wish by clicking on the delete key on the bottom of the dialog. (5) Clicking on the cancel button (6) will close the Picture info Dialog, however it does not cancel picture mode.

To cancel picture mode, the user must exit the Picture Info dialog and then press the escape key.

Note that any changes made in this dialog, do NOT affect the original picture file, in the original user's picture folder. When a picture is selected by the user, to be added to the journal, a copy of it is created by the program and all modifications (through this dialog) are made to **that** copy.